



EMPLOYMENT AND TRAINING ADMINISTRATION
UNITED STATES DEPARTMENT OF LABOR



Division of Youth Services

Tuesday, May 19, 2026



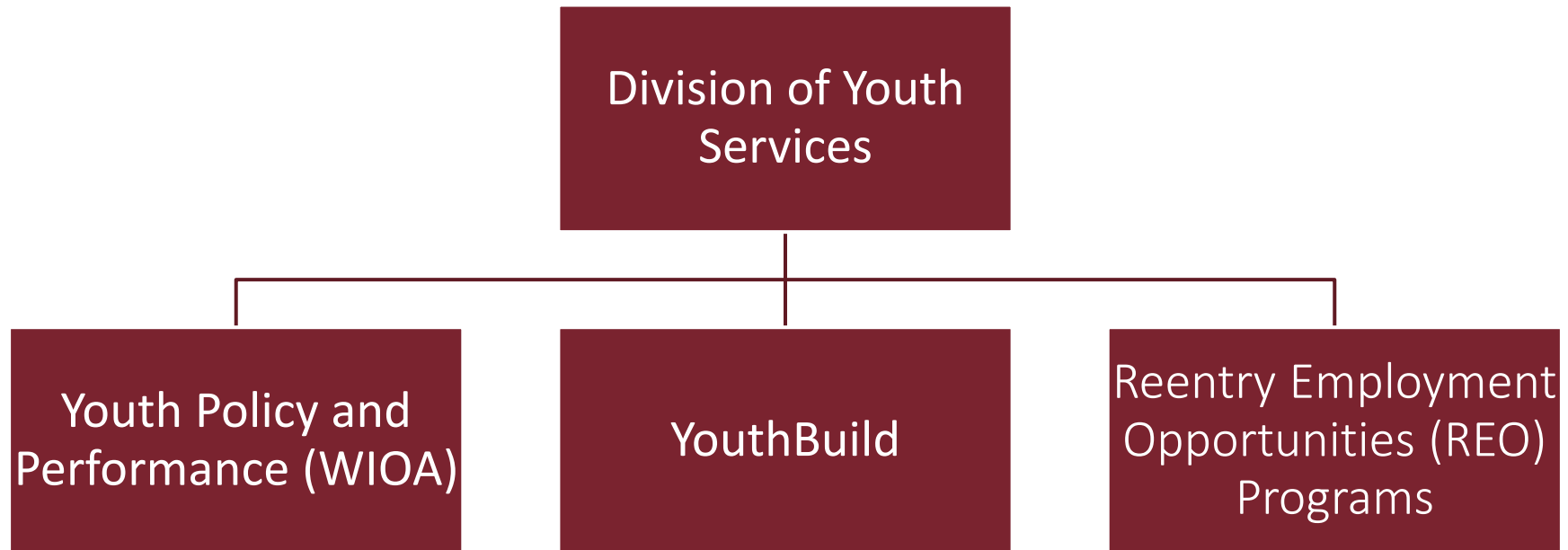
Today's Presenters



Maisha Meminger

Manpower Analyst
Division of Youth Services
Employment & Training Administration
U.S. Department of Labor

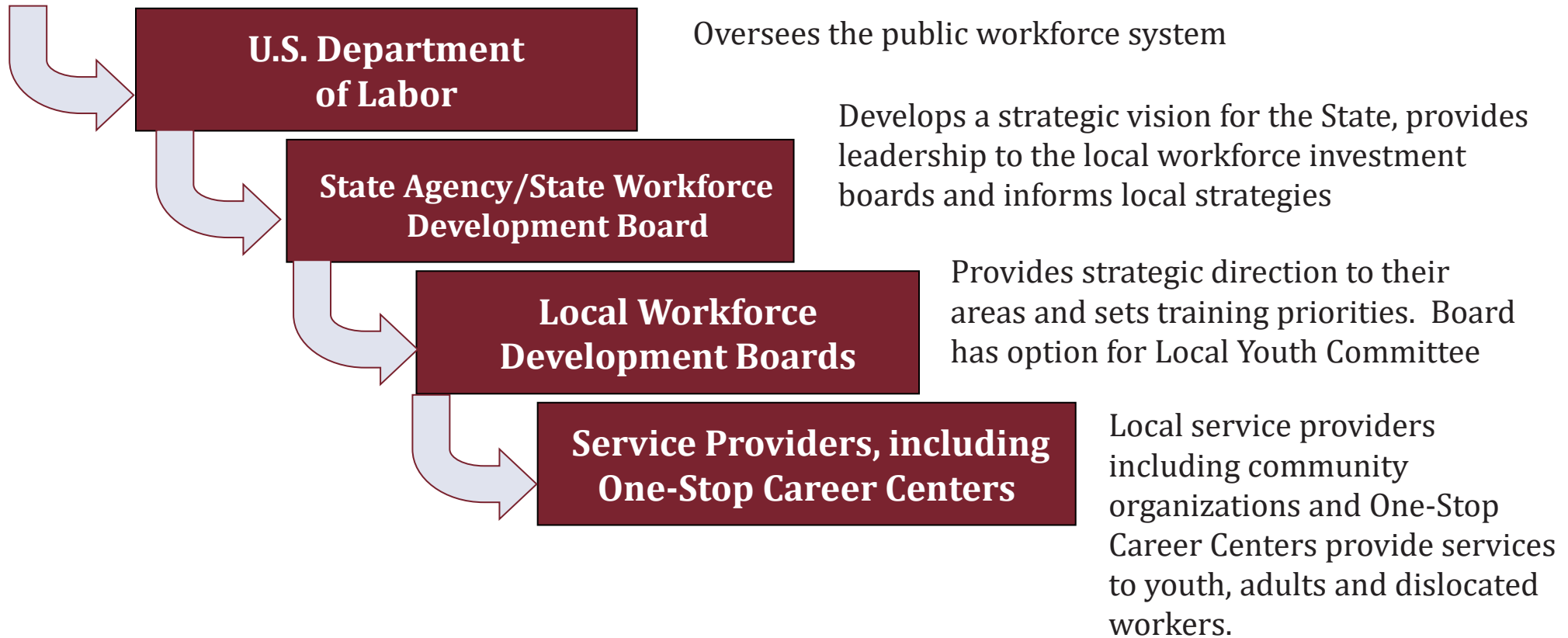
Division of Youth Services, Employment and Training Administration, Office of Workforce Investment



WIOA Youth Program

Workforce Innovation and Opportunity Act
(WIOA) Formula Youth Program

Oversight and Funding of WIOA Formula Activities



Employment
and Training
Administration

<https://www.careeronestop.org/LocalHelp/local-help.aspx>



WIOA Formula Youth Program Overview

- ▶ Workforce Innovation and Opportunity Act (WIOA) Youth program
- ▶ Serves 14–21-year-old in-school youth and 16–24-year-old out-of-school youth.
- ▶ Funds activities to improve educational and skill competencies and to build connections to employers and postsecondary education.
- ▶ Includes case management and offering of 14 program elements
- ▶ Local program design includes developing service strategies tailored to specific individual employment goals.



Employment
and Training
Administration

EMPLOYMENT AND TRAINING ADMINISTRATION
UNITED STATES DEPARTMENT OF LABOR

WIOA Youth Program: Who We Serve

- ▶ Out-of-school youth (OSY) who:
 - ▶ Are not attending school
 - ▶ Age 16-24
 - ▶ And have one or more employment barriers
- ▶ In-school youth (ISY) who:
 - ▶ Are attending school
 - ▶ Age 14-21
 - ▶ Low income
 - ▶ And have one or more employment barriers
- ▶ (1) Basic skills deficient;
- ▶ (2) An English language learner;
- ▶ (3) An offender;
- ▶ (4) A homeless individual, a homeless child or youth, or a runaway;
- ▶ (5) An individual in foster care or who has aged out of the foster care system
- ▶ (6) An individual who is pregnant or parenting;
- ▶ (7) An individual with a disability;
- ▶ (8) An individual who requires additional assistance to complete an educational program or to secure or hold employment.

WIOA Youth Program Priorities

- ▶ Out-of-school youth (OSY)
 - ▶ Minimum of 75% of funds allocated to States and local areas, except local area funds for administrative expenses, must be used to provide services to OSY
- ▶ Work experience
 - ▶ Not less than 20% of funds allocated to local areas, except local area funds for administrative expenses, must be used to provide ISY and OSY with paid and unpaid work experience

Program Elements in the WIOA Youth Program

▶ Academic

- ▶ Tutoring, study skills training, and evidence-based dropout prevention and recovery strategies
- ▶ Alternative secondary school services
- ▶ Education concurrent with workplace training

▶ Vocational

- ▶ Work experience year-round and during the summer months
- ▶ Occupational skills training
- ▶ Leadership development activities



Program Elements in the WIOA Youth Program (cont.)

▶ Support

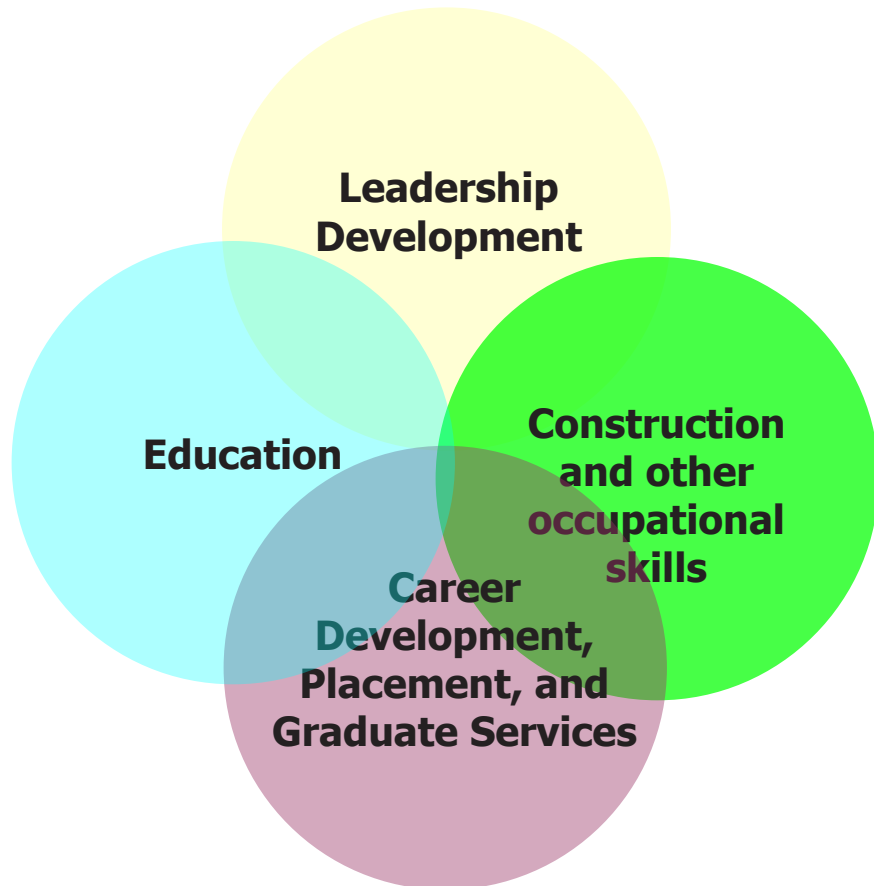
- ▶ **Supportive services**
- ▶ Adult mentoring
- ▶ Follow-up services
- ▶ **Comprehensive guidance and counseling**
- ▶ Financial literacy education
- ▶ Entrepreneurial skills training
- ▶ Services that provide labor market information, such as career awareness, career exploration and career counseling
- ▶ Preparation and transition to post-secondary education activities



YouthBuild

DOL Competitive Funded Grants

YouthBuild Program Model



YouthBuild participants:

- are between the ages of 16 and 24,
- left school before graduation, and
- are one or more of the following:
 - a member of a low-income family,
 - in foster care,
 - an offender,
 - an individual with a disability,
 - the child of an incarcerated parent, or
 - a migrant youth.
- <25% of program participants may not meet requirements above, if such individuals:
 - are basic skills deficient, or
 - have been referred by a local secondary school.

YouthBuild Program Model

- Academic coursework toward goal of attaining HSD or HSED
- Concurrent occupational skills training in an industry-recognized certification
- Community leadership/service opportunities
- Required hands on experience – for example, in construction, at least one low-income house must be built or renovated during grant period of performance



Reentry Employment Opportunities (REO)

DOL Competitive Funded Programs

REO Program Goals

- Improve workforce outcomes for justice-involved youth, young adults and adults.
- Projects typically incorporate mentoring, job training, education, legal aid services, and other transitional services.
- Projects are in areas with high rates of poverty and crime, serving those communities most in need.

Program Components

REO Adults

- ▶ REO adult programs provide employment-focused services to incarcerated and formerly-incarcerated individuals aged 18 and older, such as:
 - Occupational skills training in demand industries leading to industry –recognized credentials
 - Basic skills remediation
 - Career counseling
 - Case management
 - Workforce and job placement
 - Registered Apprenticeships
 - Referrals to other transitional services

REO Youth/ Young Adults

- ▶ REO Youth and Young Adult programs provide employment-focused services to justice-involved individuals ages 15 – 24 years old such as:
 - Mentoring
 - Career exploration
 - Internships
 - Occupational skills training in demand industries leading to industry –recognized credentials
 - Career counseling
 - Case management
 - Workforce and job placement
 - Registered Apprenticeships
 - Legal services
 - Referrals to other transitional services



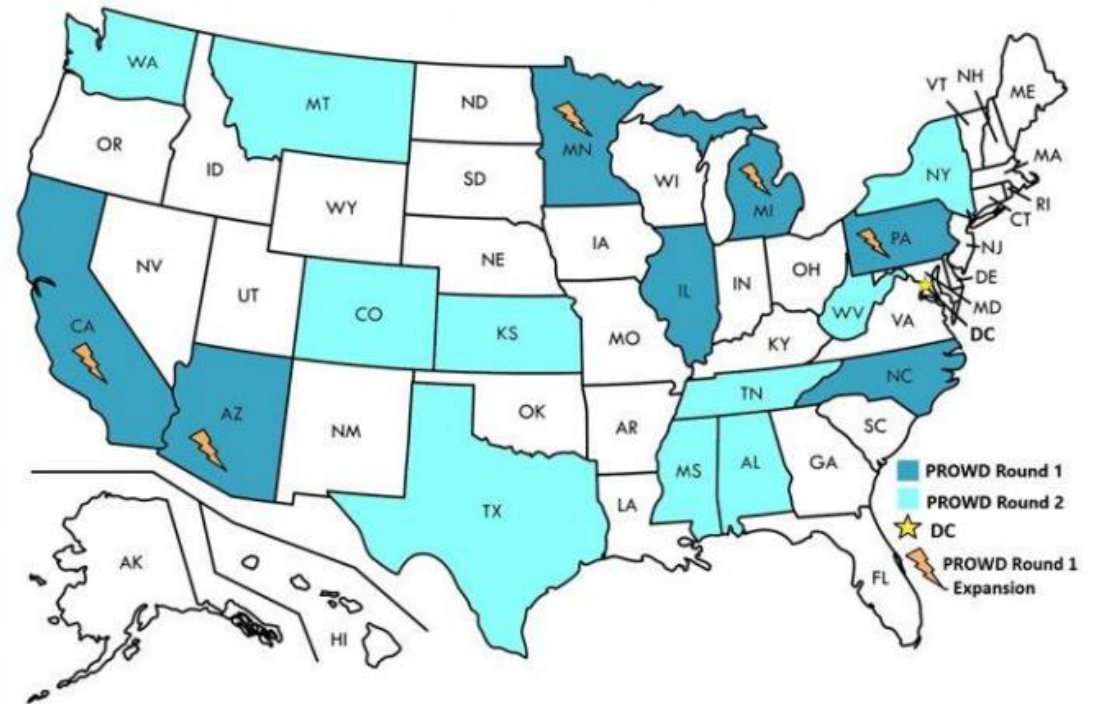
Reentry Employment in Skilled Trades, Advanced Manufacturing, Registered Apprenticeships, and Training (RESTART)

- ▶ Competition closed 4/15/26
- ▶ \$81M available, 20 grants expected next month
 - ▶ \$30M to intermediaries; remaining \$ to states & tribes
 - ▶ Period of Performance: 7/1/26 – 12/31/29
- ▶ Youth AND adult grant initiative
 - ▶ States & tribes: Adults (25+), Young Adults (18-24) & Youth (15-17)
 - ▶ Intermediaries: Youth & Young Adults **Only**
- ▶ Priority Consideration:
 - ▶ Focus on shipbuilding-related training and/or employment
 - ▶ RAP Sponsors as employer partners
- ▶ Required Partners (State Applicants):
 - ▶ 1 local reentry org
 - ▶ The SWDB
 - ▶ The SAA
 - ▶ 1 criminal justice system partner
 - ▶ 3 employers within: shipbuilding, AI infrastructure build-out, advanced manufacturing, nuclear energy, transportation, domestic mineral production, & IT
- ▶ Key Grant Activity Requirements:
 - ▶ Training programs that result in credentials
 - ▶ Screening for WIOA eligibility & co-enrollment

Partners for Reentry Opportunities in Workforce Development (PROWD)

- ▶ Collaboration with DOJ
- ▶ Provides targeted employment services to federally incarcerated individuals as they approach community reentry
- ▶ Seeks to better align job training and skills development services provided to program participants to the specific labor market needs of the communities where they will live.
- ▶ State agencies partner with community organizations and minimum- and low-security federal correctional institutions to provide coordinated services across three stages: during incarceration in federal prisons, during time spent in residential reentry centers, and after release into the community.

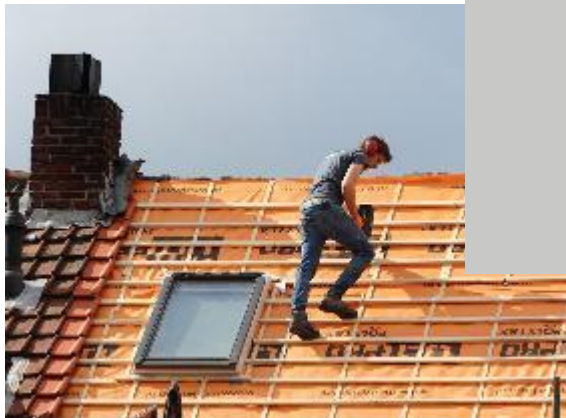
PROWD Grant Awards and Recipients





APRIL 2026

Registered Apprenticeship Overview



Office of Apprenticeship

APPRENTICESHIPUSA



ABOUT US

FAST FACTS

698K+

Active Apprentices

26K+

Active apprenticeship programs

1,999

New apprenticeship programs since January

79%

Growth of new apprentices over the past decade



OUR MISSION

The **U.S. Department of Labor's Office of Apprenticeship** promotes and oversees quality, accessible Registered Apprenticeship opportunities for workers seeking higher-skilled, higher-paying jobs and engages employers seeking to build a qualified workforce.

Learn more at [Apprenticeship.gov](https://www.apprenticeship.gov)



REGISTERED APPRENTICESHIP: A **PROVEN** WORKFORCE SOLUTION

Registered Apprenticeship is an **industry-driven, high-quality** career **pathway** where employers can **develop** and prepare their **future workforce**, and individuals can obtain **paid work** experience with a mentor, **receive progressive wage increases, classroom instruction**, and a portable, **nationally-recognized credential**.

DISTINGUISHING FACTORS

FIVE COMPONENTS OF REGISTERED APPRENTICESHIP



Industry-Led



Paid Job



Supplemental
Education



Structured On-the-Job
Learning/Mentorship



Nationally-Recognized
Credentials

A DIVERSE RANGE OF INDUSTRIES



Agriculture



**Advanced
Manufacturing**



Construction



Education



Energy



**Financial
Services**



Healthcare



Hospitality



Public Service



Technology



Telecommunications



Transportation



Artificial Intelligence

BENEFITS FOR CAREER SEEKERS

- Earn as you learn
- Avoid student debt
- Gain workplace-relevant skills in the field of their choice
- Ease the transition from school to career
- Receive a nationally-recognized, portable credential and/or college credits
- Jump start your career



RESOURCES

Want more info? Visit the [Career Seeker page on Apprenticeship.gov](#).


Did you know? 94% of apprentices who complete an apprenticeship retain employment, with an *average salary of \$84,000*.

American Job Centers and Workforce Boards



your source for career exploration, training & jobs

Sponsored by the U.S. Department of Labor. A proud partner of the americanjobcenter network.

Search CareerOneStop 

Explore Careers ▼

Find Training ▼

Job Search ▼

Find Local Help ▼

Toolkit ▼

Resources For ▼

www.CareerOneStop.org

▲
COVID-19
Unemployment
Insurance Info

▲
Explore Careers

▲
Find Training

▲
Find Local Help



Resources for



Workforce Boards

- ▶ WIOA formula funds are provided to states and outlying areas.
- ▶ States in turn allocate funds to local workforce areas to deliver a comprehensive array of youth services to eligible youth.
- ▶ States and local areas focus services on assisting out-of-school youth (OSY) and in-school youth (ISY) with one or more barriers to employment.

What can boards do to assist with local program design

- ▶ Direct and lead local youth programs in improving the quality and effectiveness of youth services.
- ▶ Act as conveners, boards members can bring partners together, align services and set an overall vision for youth programming.
- ▶ Ensure all the program elements are made available through direct provision or through partnerships. WIOA section 129(c) (2) includes the 14 program elements.

Technical Assistance Tools

Find a career I like



Finish high school



Get work experience



Write a resume



Get a job



Get training



**Easier Than Ever. Faster Than Ever.
Your Workflow Could Use
WorkforceGPS.**

Search



[Advanced Search](#)

[Tell us how we're doing! →](#)

Welcome to WorkforceGPS

WorkforceGPS is your online technical assistance website created to help build the capacity of America's public workforce investment system. Sponsored by the Employment and Training Administration of the U.S. Department of Labor, WorkforceGPS was developed specifically for workforce professionals, educators, and business leaders. Here you will find curated communities of interest, useful webinars and other training resources, promising workforce development practices, and relevant evidence-based research – giving you the tools you need to help you create innovative approaches to improve the employment prospects of job seekers. We invite you to come and engage with your peers by joining WorkforceGPS today.

[BECOME A MEMBER ▶](#)

Featured Content

WORKFORCEGPS





Contact Us

- ▶ Employment and Training Administration's
- ▶ Division of Youth Services
 - ▶ youth.services@dol.gov
 - ▶ Become a member of Youth Connections Community
 - ▶ youth.workforcegps.org

